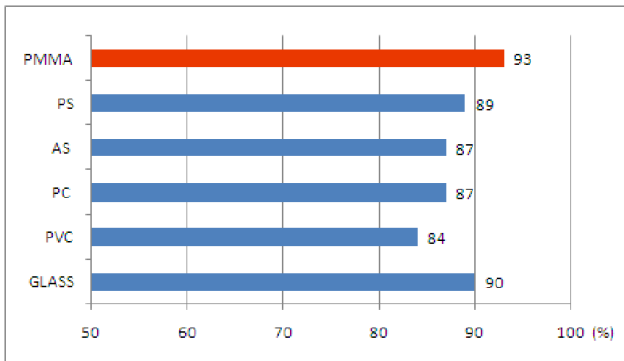
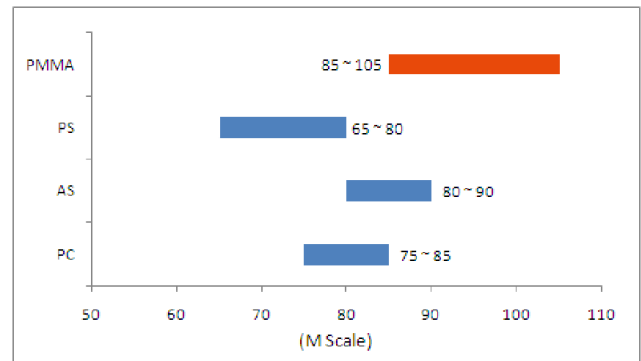


一般物理性質

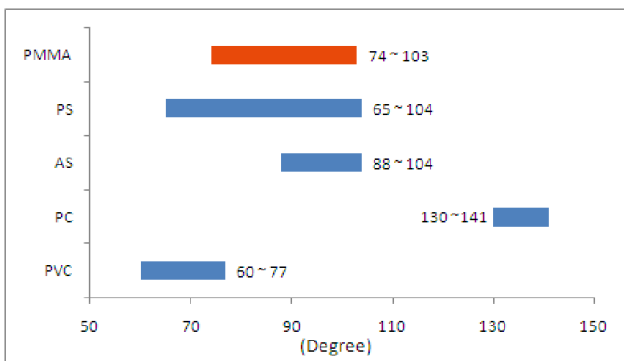
壓克力的優勢



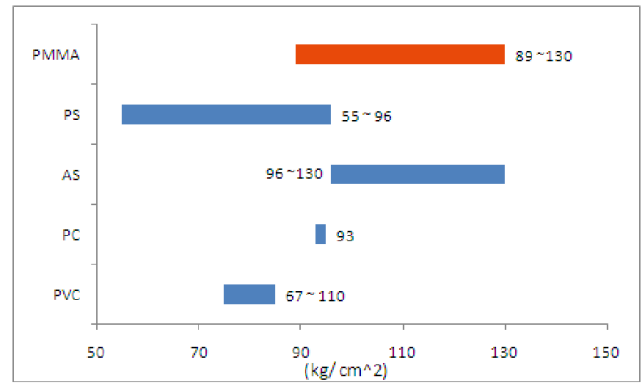
透光率 (ASTM D1003)



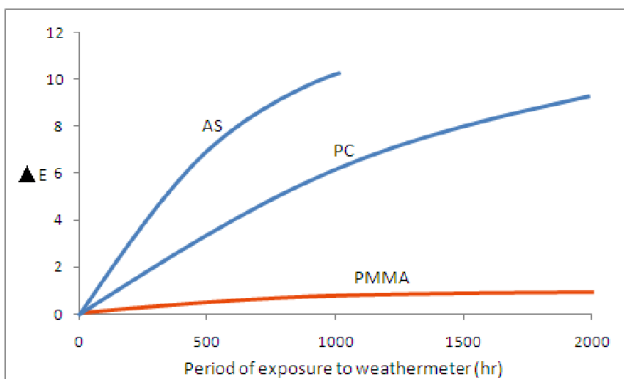
洛氏硬度 (ASTM D785)



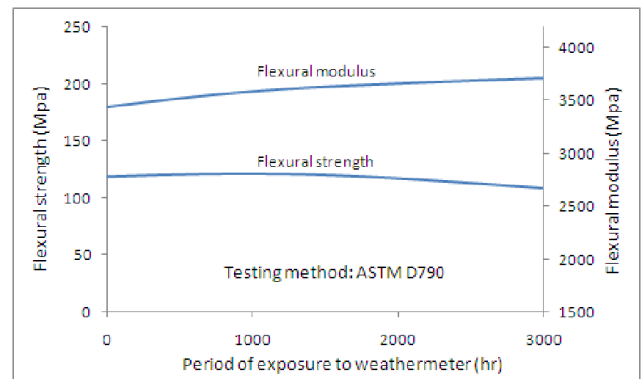
熱變形溫度 (ASTM D648)



彎曲強度 (ASTM D790)



耐候性 - 顏色隨著曝曬時間而變色的程度



PMMA 彎曲強度隨著曝光時間而變化的程度